

Wisnetworks Wireless Smart MIMO Antenna

WIS-ANT

WiD™

TDMA protocol

5 GHz

2.4 GHz



Product Overview

The WIS-AN series is a family of Wisnetworks smart outdoor antenna operating in the 2.4GHz and 5GHz bands. It is fully compatible with WiD TDMA protocol and IEEE 802.11a/b/g/n and could work seamlessly with Wisnetworks base station such as WIS-S2300 and WIS-S5300, WIS-L5800N. It is also fully compatible with current 2*2 MIMO devices and would help the wireless ISPs and SIs build high performance and cost-effective wireless networks.

Features and Benefits

- Seamlessly work with Wisnetworks S-series base station
- Incredible wireless transmission range
- Compatible with WiD TDMA which greatly improves the network scalability
- Provide outdoor weatherproof N-type connectors
- Support legacy 2*2 MIMO 802.11n and 802.11a/b/g
- Ideal for wireless coverage and point to point or point to multi-point connection

Product Series:

Smart Sector Antenna Series

Wisnetworks smart sector antenna series is including both 2.4GHz and 5GHz sector antenna with different antenna gain and sector degree. It is highly compact to work with WIS-S2300 and WIS-S5300 wireless base station, and 3-4 of those combination can make a base station site and provide incredibly long range wireless coverage and PtMP connections by any direction.



Wisnetworks Wireless Smart MIMO Antenna

Smart Dish Antenna Series

Wisnetworks smart dish antenna series is for 5GHz only with different antenna gain. It is also highly compact to work with WIS-S5300 wireless base station, and a pair of those combination can be used as ultra-long distance wireless bridge, providing more than 50km wireless point-to-point connection.

5GHz 34dBi Φ 1250mm



WIS-AND5834

5GHz 32dBi Φ 950mm



WIS-AND5832

5GHz 29dBi Φ 600mm



WIS-AND5829

Smart Grid Antenna Series

Wisnetworks smart grid antenna series is for 5GHz only with different antenna gain. It is also highly compact to work with WIS-S5300/WIS-L5800N wireless base station, and a pair of those combination can be used as ultra-long distance wireless bridge, providing more than 30km wireless point-to-point connection with best wind resistance ability.

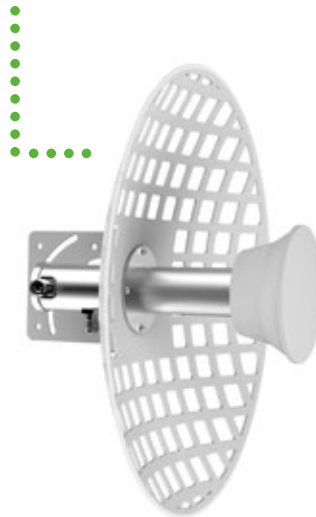
Wisnetworks Wireless Smart MIMO Antenna

5GHz 29dBi Φ 600mm



WIS-ANG5829

5GHz 24dBi Φ 400mm



WIS-ANG5824

Smart Omni Antenna Series

Wisnetworks smart omni-directional antenna series is including both 2.4GHz and 5GHz omni with up to 12dBi antenna gain. It is fully compatible with WIS-S2300 and WIS-S5300 wireless base station. It can be used for wireless hotspot or wireless PtMP connections.

2.4GHz 12dBi



WIS-ANO2412

5GHz 12dBi



WIS-ANO5812

Wisnetworks Wireless Smart MIMO Antenna

Specification

Sector Antenna

Model	WIS-ANS5819-120	WIS-ANS5820-90	WIS-ANS5818-90	WIS-ANS2415-120	WIS-ANS2417-90	WIS-ANS2416-90
Product Diagram						
Frequency	4.9~6.0GHz	4.9~6.0GHz	4.9~6.0GHz	2.3~2.7GHz	2.3~2.7GHz	2.3~2.7GHz
Gain	19dBi	20dBi	18dBi	15dBi	15dBi	16dBi
Horizontal Beamwidth	120°(6dB)	90°(6dB)	90°(6dB)	120°(6dB)	90°(6dB)	90°(6dB)
Vertical Beamwidth	4°	4°	8°	8°	8°	15°
Max VSWR	<1.5	<1.5	<1.5	<1.5	<1.5	<1.5
F/B Ratio	>25 dB	>25 dB	>25 dB	>25 dB	>25 dB	>25 dB
Wind Survivability	150 mph	150 mph	150 mph	150 mph	150 mph	150 mph
Polarization	Dual-Polarization	Dual-Polarization	Dual-Polarization	Dual-Polarization	Dual-Polarization	Dual-Polarization
Connectors	2*RP-SMA	2*RP-SMA	2*RP-SMA	2*RP-SMA	2*RP-SMA	2*RP-SMA
Dimensions(mm)	700*133*57	700*133*57	450*165*35	700*133*57	700*133*57	450*165*35
Weight(kg)	2.1	2.1	2.0	2.1	2.1	2.0
Certification	CE, RoHS	CE, RoHS	CE, RoHS	CE, RoHS	CE, RoHS	CE, RoHS



Dish Antenna

Model	WIS-AND5829	WIS-AND5832	WIS-AND5834
Product Diagram			
Frequency	4.9~6.0GHz	4.9~6.0GHz	4.9~6.0GHz
Gain	29dBi	32dBi	34dBi
Horizontal Beamwidth	6°	4°	3°
Vertical Beamwidth	6°	4°	3°
Max VSWR	<1.5	<1.5	<1.5
F/B Ratio	>35 dB	>38 dB	>38 dB
Wind Survivability	125 mph	125 mph	125 mph
Polarization	Dual-Polarization	Dual-Polarization	Dual-Polarization
Connectors	2*N-type Female	2*N-type Female	2*N-type Female
Dimensions(mm)	Φ600	Φ950	Φ1250
Weight(kg)	6.15	7	11.5
Certification	CE, RoHS	CE, RoHS	CE, RoHS

Grid Antenna

Model	WIS-ANG5824	WIS-ANG5829
Product Diagram		
Frequency	4.9~6.0GHz	4.9~6.0GHz
Gain	24dBi	29dBi
Horizontal Beamwidth	9°	6°
Vertical Beamwidth	9°	6°
Max VSWR	<1.5	<1.5
F/B Ratio	N/A	N/A
Wind Survivability	150 mph	150 mph
Polarization	Dual-Polarization	Dual-Polarization
Connectors	2*N-type Female	2*N-type Female
Dimensions(mm)	Φ400	Φ600
Weight(kg)	4.2	5.4
Certification	CE, RoHS	CE, RoHS

Omni Antenna

Model	WIS-ANO2412	WIS-ANO5812
Product Diagram		
Frequency	2.3~2.7GHz	4.9~6.0GHz
Gain	12dBi	12dBi
Horizontal Beamwidth	360°	360°
Vertical Beamwidth	7°	7°
Max VSWR	<1.5	<1.5
F/B Ratio	N/A	N/A
Wind Survivability	150 mph	150 mph
Polarization	Dual-Polarization	Dual-Polarization
Connectors	2*N-type Female	2*N-type Female
Dimensions(mm)	1200*110*73	590*110*73
Weight(kg)	3.6	1.8
Certification	CE, RoHS	CE, RoHS