



5GHz Outdoor Wireless Bridge

WIS-D523

WIS Networks Ltd.
www.wisnetworks.com

E-mail: info@wisnetworks.com

Version 1.0

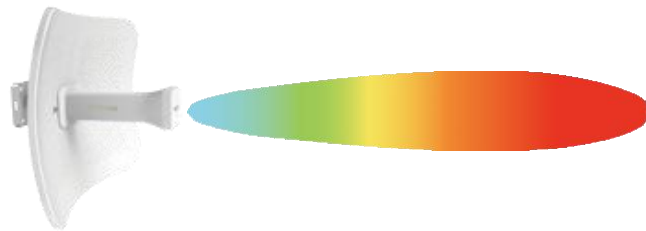
Product Overview

WIS-D523 is a 433Mbps outdoor wireless dish bridge based on 802.11a/n/ac technology. It is industry die-cast IP65 design with high performance, cost-effective and dedicated to long distance wireless network solutions. Featuring the revolutionary WiD technology, WIS-D523 is fully compatible with Wis networks base station and CPE thus greatly improving the network scalability in throughput and latency. With 23dBi dish antenna, a pair of WIS-D523 can easily build 10km+ long range wireless connection and keep a high speed rate. WIS-D523 is best applied to rural wireless Internet, wireless backhaul and other industrial wireless solutions.

Features

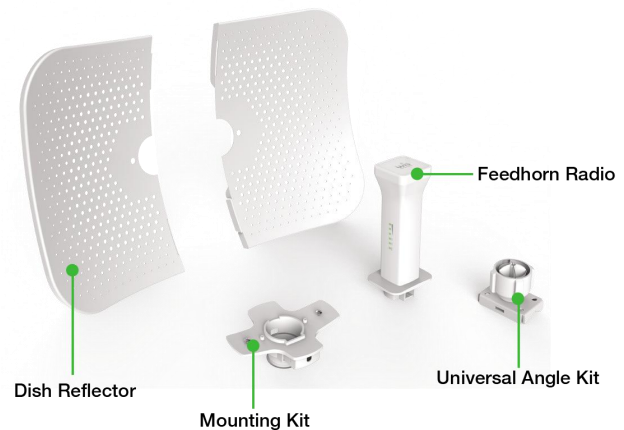
Incredible Long Range

- Up to 20dbm Tx Power
- 23dBi Dish antenna
- Wireless Speed up to 433Mbps
- Narrower Beamwidth for noise immunity



Revolutionary Design

- Cost-effective passive PoE
- IP65 Waterproof
- Disassembled Dish Design
- 360 Universal Antenna Alignment
- IP66 Waterproof



Full Feature & Performance

- Full WisOS Support
- Auto-Distance Adjust
- 10km+ Availability
- Fully Managed by WiController

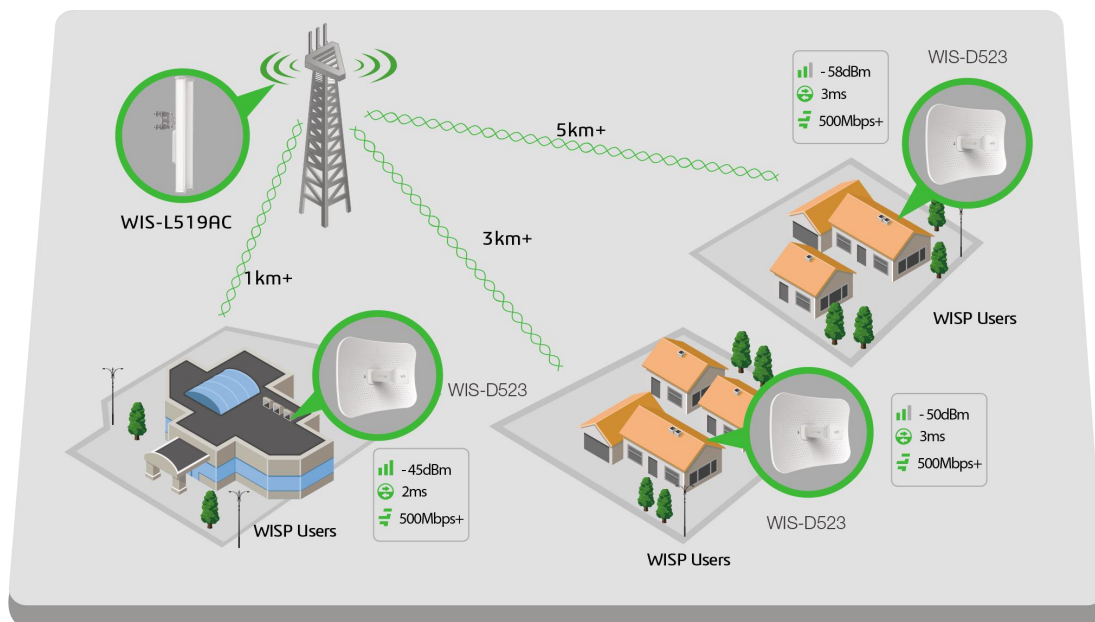


Features and Benefits

- 23dBi dish antenna to build robust wireless PtP link
- Compliant with 802.11ac/n/a, Wireless speed up to 433Mbps
- Wireless Solutions for Surveillance
- 5 kilometers throughput 100Mbps+
- 80/40/20MHz selectable for channel bandwidth
- Easy deployment and adjustment with provided mounting kits
- Passive POE(24VDC) for flexible deployment
- Weather-proof design for outdoor environment
- Up to 8kV ESD protection



Network Diagram



Specifications

Radio

- 802.11a/n/ac radio
- Wireless Speed up to 867Mbps
- Frequency Range:
- 5.150-5.250GHz
- 5.250-5.350GHz (Support DFS)
- 5.470-5.725GHz(Support DFS)
- 5.725-5.825GHz
- Tx Power up to 20dbm
- Rx Sensitivity
- 300M:-71dBm@10% PER
- 54M:-75dBm@10% PER
- 1M:-95dBm@10% PER

Antenna

- 23dBi dish antenna
- Beamwidth(HPBW) Horizontal:12, Vertical:12°
- Open space 5-10KM

Physical Parameters

- Dimension: 300*400mm
- Wight: 1.5kg
- Enclosure: (Dish)
- ESD Protection: 8kV
- Working Temp: -20 ~ 50°C
- Storage Temp: -30 ~60°C
- Working Humidity: 10%~95% non-condensing

Interfaces

- 1x 10/100 Base-T Ethernet
(LAN with Passive PoE)

Security

- Integrated Firewall
- WPA/WPA2;WPA-PSK/WPA2-PSK (AES/TKIP)
Encryption; 64/128-bit WEP;

LED

- Power: On/Off
- LAN:On/Off/Flashing
- WLAN:On/Off/Flashing
- RSSI Signal:1,2,3

Power

- 24VDC, 0.75A
- Power Consumption: 6W

Certification

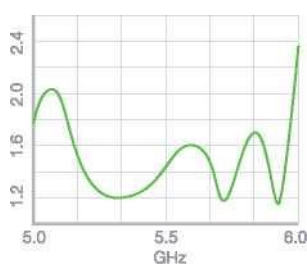
- CE, RoHS

Package content

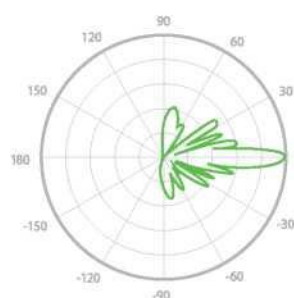
- WIS-D523 Radio
- Quick Setup Guide
- Power Adapter with Passive PoE
- Mounting bracket & kits

Specifications

VSWR



Vertical Azimuth



Vertical Elevation

