



Quick Setup Guide

WISCloud Access Point

Models: WCAP-AX

1 Package content



AP



Mounting kits



Quick Setup Guide

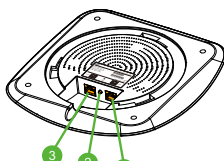
2 Interface

LED



LED	Description
PWR	On: the radio is powered up Off: the radio is powered off
SYS	On: system is running normally Off: system is running abnormal
WiFi (2.4G/5G)	On: WiFi is enabled Off: WiFi is disabled

Interface



No.	Description
1	Ethernet port
2	Reset button Press more than 8s to restore factory settings
3	POE IN(802.3af/at)

3 Install the radio

Instructions before installing

- Locate a suitable place with wall-mount or ceiling-mount.
- Do not install in illegal places to avoid violating the local regulatory rules.
- You may need tools below.



Ladder



Electric drill

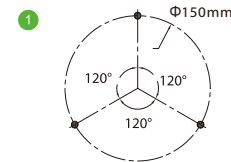


Screw driver

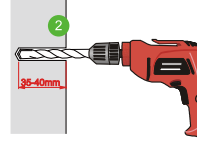


Hammer

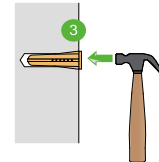
Install on the wall



- 1 Mark the drilling position according to the diagram.



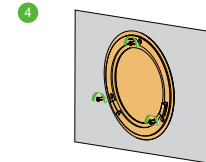
- 2 Use 6mm drill and drill the hole depth 35-40mm.



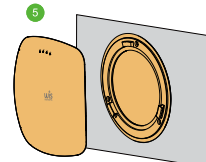
- 3 Drive 3 expansion screw into the hole with a hammer.

ATTENTION

The hole depth should not be more than 40mm, otherwise the device could not be mounted solidly.



- 4 Drive the self-tapping screw.

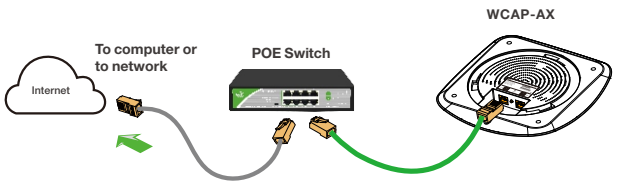


- 5 Put the device to the mounting bracket, rotate as shown direction to complete the installation.

ATTENTION

Plug the Ethernet cable first before the final installation.

Power up the radio



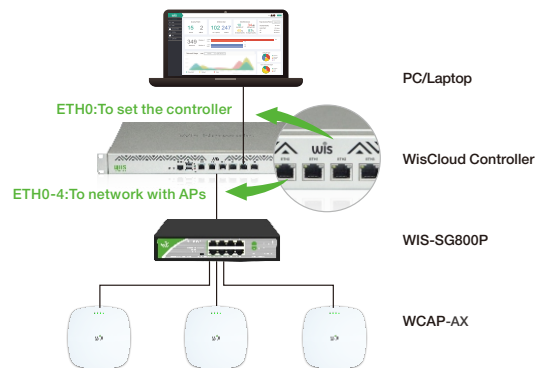
Connect one end of an Ethernet cable to the **POE** port of the provided PoE DC Adapter and the other end of the Ethernet cable to the RJ45 port of the device. Then, connect the **LAN** port of the PoE DC Adapter to a PC or switch using another Ethernet cable. Finally, plug the PoE DC Adapter into a standard electrical wall socket.

ATTENTION

If you use other PoE Adapter which is not provided by Wisnetworks, we can't provide warranty service if device damage caused.

4 Managed by Controller

1. Check all wires are correctly connected.
2. Put the cloud controller in the same network (subnet) with the access point.
3. Connect one PC to the controller ETH0 port and login web **192.168.1.1**



4. When login page appears enter "admin" in the password fields.



5. Go to the **AP** menu of the controller, and you will find the new access point waiting for manage. Simply press the manage button and add the aps to controller network then ap will be managed.

6. For more configurations like cloud deployment and wireless settings please visit website **www.wis.us**

Safety Notices

1. Read, follow, and keep these instructions.
2. Heed all warnings.
3. Only use attachments/accessories specified by the manufacturer.

WARNING:

Do not use this product in location that can be submerged by water.

WARNING:

Avoid using this product during an electrical storm. There may be a remote risk of electric shock from lightning.

Electrical Safety Information

1. Compliance is required with respect to voltage, frequency, and current requirements indicated on the manufacture's label. Connection to a different power source than those specified may result in improper operation, damage to the equipment or pose a fire hazard if the limitations are not followed.
2. There are no operator serviceable parts inside this equipment. Service should be provided only by a qualified service technician.
3. This equipment is provided with a detachable power cord which has an integral safety ground wire intended for connection to a grounded safety outlet.
 - a. Do not substitute the power cord with one that is not the provided approved type. Never use an adapter plug to connect to a 2-wire outlet as this will defeat the continuity of the grounding wire.
 - b. The equipment requires the use of the ground wire as a part of the safety certification, modification or misuse can provide a shock hazard that can result in serious injury or death.
 - c. Contact a qualified electrician or the manufacturer if there are questions about the installation prior to connecting the equipment.
 - d. Protective earthing is provided by Listed AC adapter. Building installation shall provide appropriate short-circuit backup protection.
 - e. Protective bonding must be installed in accordance with local national wiring rules and regulations.

CE Marking

CE marking on this product represents the product is in compliance with all directives that are applicable to it. Alert sign must be indicated if a restriction on use applied to the product and it must follow the CE marking.



RoHS/WEEE Compliance Statement



European Directive 2002/96/EC requires that the equipment bearing this symbol on the product and/or its packaging must not be disposed of with unsorted municipal waste. The symbol indicates that this product should be disposed of separately from regular household waste streams. It is your responsibility to dispose of this and other electric and electronic equipment via designated collection facilities appointed by the government or local authorities. Correct disposal and recycling will help prevent potential negative consequences to the environment and human health. For more detailed information about the disposal of your old equipment, please contact your local authorities, waste disposal service, or the shop where you purchased the product.

FCC STATEMENT

1. This device complies with Part 15 of the FCC Rules. Operation is subject to the following two conditions:
 - (1) This device may not cause harmful interference.
 - (2) This device must accept any interference received, including interference that may cause undesired operation.

2. Changes or modifications not expressly approved by the party responsible for compliance could void the user's authority to operate the equipment.

NOTE: This equipment has been tested and found to comply with the limits for a Class B digital device, pursuant to Part 15 of the FCC Rules. These limits are designed to provide reasonable protection against harmful interference in a residential installation.

This equipment generates uses and can radiate radio frequency energy and, if not installed and used in accordance with the instructions, may cause harmful interference to radio communications. However, there is no guarantee that interference will not occur in a particular installation. If this equipment does cause harmful interference to radio or television reception, which can be determined by turning the equipment off and on, the user is encouraged to try to correct the interference by one or more of the following measures:

- a. Reorient or relocate the receiving antenna.
- b. Increase the separation between the equipment and receiver.
- c. Connect the equipment into an outlet on a circuit different from that to which the receiver is connected.
- d. Consult the dealer or an experienced radio/TV technician for help.

This equipment complies with FCC radiation exposure limits set forth for an uncontrolled environment. This equipment should be installed and operated with minimum distance 20cm between the radiator & your body.

Limited Warranty

Wisnetworks warrants that the product(s) furnished hereunder (the "Product(s)") shall be free from defects in material and workmanship for a period of one (1) year from the date of shipment by Wisnetworks under normal use and operation. Wisnetworks sole and exclusive obligation and liability under the foregoing warranty shall be for Wisnetworks, at its discretion, to repair or replace any Product that fails to conform to the above warranty during the above warranty period. The expense of removal and reinstallation of any Product is not included in this warranty. The warranty period of any repaired or replaced Product shall not extend beyond its original term.

Warranty Condition

The above warranty does not apply if the Product:

- (a) has been modified and/or altered, or an addition made thereto, except by Wisnetworks, or our authorized representatives, or as approved by Wisnetworks in writing;
- (b) has been painted, rebranded or physically modified in any way;
- (c) has been damaged due to errors or defects in cabling;
- (d) has been subjected to misuse, abuse, negligence, abnormal physical, electromagnetic or electrical stress, including lightning strikes, or accident;
- (e) has been damaged or impaired as a result of using third party firmware;
- (f) has no original Wisnetworks MAC/SN label, or is missing any other original Wisnetworks label(s);
- (g) human reasons without according to the guide or user manual.

In addition, the above warranty shall apply only if: the product has been properly installed and used at all times in accordance, and in all material respects, with the applicable Product documentation; all Ethernet cabling runs use CAT5 (or above), and for outdoor installations, shielded Ethernet cabling is used, and for indoor installations, indoor cabling requirements are followed.

Online Support

For more guide and help, please go to **www.wis.us**

You can contact email **sales@wis.us**
We'll reply you within one weekday.