



## **WIS-H19G-LTE**

Integrated High Gain 19dBI Antenna Cat6 LTE CPE  
Include LTE Modem

Version 1.0

## Product Overview

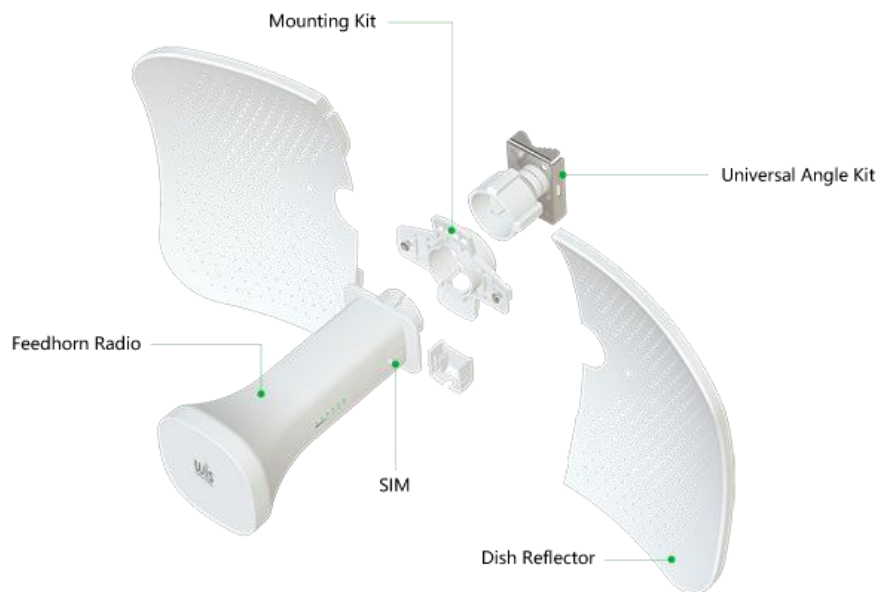
The WIS-H19G-LTE is an integrated high gain 19dBi Cat6 4G LTE Outdoor CPE. It supports maximum 300Mbps of the downlink for LTE to provide stable and high-speed wireless broadband access to residential and SMB/SOHO users. Powered by PoE, equipped with the high gain dish antenna and complied with Ingress Protection Rating IP65, it's able to deliver stable mobile broadband access in any situation.

Unit is designed, for remote locations that are within cellular network coverage. Mount it outdoors, on a pole, mast or any high enough structure, and connect even where cell phones can't. Due to its large sized high gain antenna, the device is capable to connect to cell towers in extreme rural locations, giving you the ability to provide last mile internet access where nothing else is available.

## Features

### Hardware

- LTE Category 6, 300 (DL)/50 (UL)
- Support LTE FDD/LTE TDD/WCDMA radio systems
- 24v Power over Ethernet
- 19dBi Directional Antenna
- IP65 Design, suitable in harsh environment
- 1 x SIM Card Slot



## Cat 6 Module

### EU Module

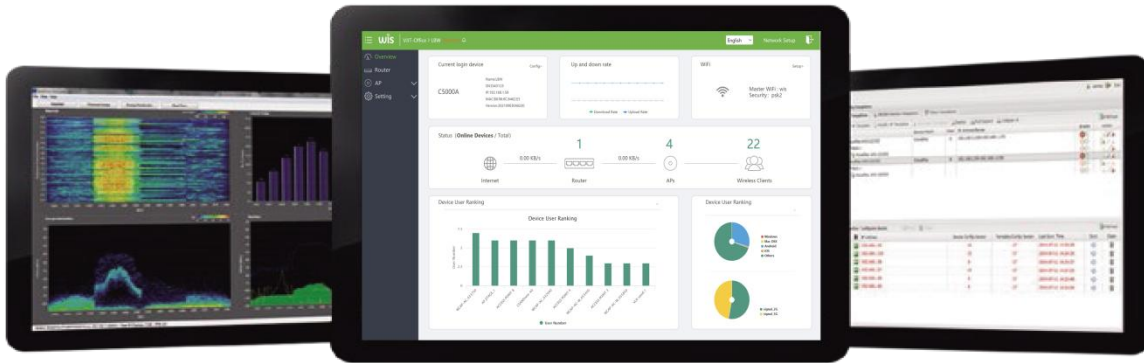
- LTE-FDD : B1/B3/B5/B7/B8/B20/B28/B32
- LTE-TDD : B38/B40/B41
- 2 x CA : B1+B1/B5/B8/B20/B28; B3+B3/B5/B7/B8/B20/B28; B7+B5/B7/B8/B20/B28;
- WCDMA: B1/B3/B5/B8

### EU Module

- LTE-FDD :B2/B4/B5/B7/B12/B13/B25/B26/B29/B30/B66
- 2 x CA : B2+B2/B5/B12/B13/B29; B4+B4/B5/B12/B13/B29; B7+B5/B7/B12/B26; B25+B5/B12/B25/B26; B30+B5/B12/B29; B66+B5/B12/B13/B29/B66
- WCDMA:B2/B4/B5

### Software

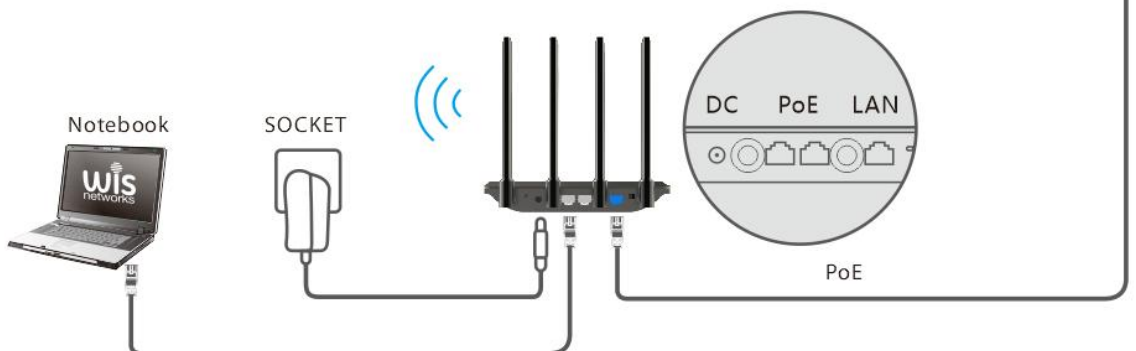
- Router: IPv4, Static Routing, Routing Forwarding
- APN
- Dynamic NAT switch
- DHCP Server
- DHCP Rela



### Typical Applications



4G Base station



## Specifications

|                         |   |
|-------------------------|---|
| Product code            | WIS-H19G-LTE  |
| Architecture            | MIPSBE  |
| CPU                     | MTK7621A  |
| Size of RAM             | 256MB   |
| Flash                   | 16MB  |
| Communication Standard  | -- 3GPP , LTE CAT6  |
| Applicable Network      | -- 4G   |
| 4G Transmission Rate    | 300 Mbps / 50 Mbps<br>(Theoretical value. The actual rate depends on the operator.)                                       |
| Antenna Frequency Range | 1.7-4.2GHz 2X2 MIMO   |
| Antenna Gain            | 19dBi Directional Antenna   |
| Network Port            | 1 GE port, 1 SIM card slot (Micro-SIM)  |
| Software Functions      | IPv4, Static Routing, Routing Forwarding<br>APN<br>Dynamic NAT<br>switch<br>DHCP Server<br>DHCP Rela                      |
| Power Supply            | PoE, 24V DC   |
| Power Consumption       | <12W  |
| Led Indicator           | Power/LTE/ETH/Signal Strength   |
| Temperature             | - Operating temperature: 0 °C ~ 40 °C,<br>- storage temperature: -20 °C ~ +70 °C<br>- Humidity: 5% ~ 95% (non-condensing) |
| Dimensions              | 350*270*285mm   |
| Protection Level        | IP65  |
| Weight                  | 2kg   |

## Order information

| Model         | WIS-H19G-LTE(EU)   | WIS-H19G-LTE(US)   |
|---------------|--|--|
| Suitable area | EMEA/APAC/Brazil   | North America  |
| Support       | <ul style="list-style-type: none"> <li>● LTE-FDD : B1/B3/B5/B7/B8/B20/B28/B32</li> <li>● LTE-TDD : B38/B40/B41</li> <li>● 2 x CA : B1+B1/B5/B8/B20/B28;<br/>B3+B3/B5/B7/B8/B20/B28;</li> <li>B7+B5/B7/B8/B20/B28;</li> <li>● WCDMA: B1/B3/B5/B8</li> </ul> | <ul style="list-style-type: none"> <li>● LTE-FDD : B2/B4/B5/B7/B12/B13/B25/B26/B29/B30/B66</li> <li>● 2 x CA: B2+B2/B5/B12/B13/B29;<br/>B4+B4/B5/B12/B13/B29;</li> <li>B7+B5/B7/B12/B26;</li> <li>B25+B5/B12/B25/B26;</li> <li>B30+B5/B12/B29;</li> <li>B66+B5/B12/B13/B29/B66</li> <li>● WCDMA: B2/B4/B5</li> </ul> |