



## **WIS-H19-LTE**

Integrated High Gain 19dBI Antenna Cat4 LTE CPE

Include LTE Modem

Version 1.0

## Product Overview

The WIS-H19-LTE is an integrated high gain 19dBi Cat4 4G LTE Outdoor CPE. It supports maximum 150Mbps of the downlink for LTE to provide stable and high-speed wireless broadband access to residential and SMB/SOHO users. Powered by PoE, equipped with the high gain dish antenna and complied with Ingress Protection Rating IP65, it's able to deliver stable mobile broadband access in any situation.

Unit is designed, for remote locations that are within cellular network coverage. Mount it outdoors, on a pole, mast or any high enough structure, and connect even where cell phones can't. Due to its large sized high gain antenna, the device is capable to connect to cell towers in extreme rural locations, giving you the ability to provide last mile internet access where nothing else is available.

## Features

### Hardware

- LTE Category 4, 150 (DL)/50 (UL)
- Support LTE FDD/LTE TDD/WCDMA radio systems
- 24v Power over Ethernet
- 19dBi Directional Antenna
- IP65 Design, suitable in harsh environment
- 1 x SIM Card Slot



## Cat 4 Module

### EU Module

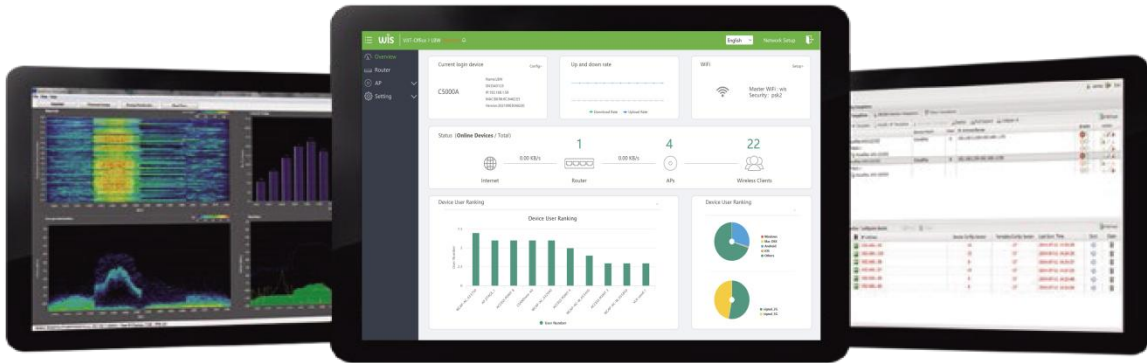
- LTE-FDD: B1/3/5/7/8/20
- LTE-TDD: B40
- WCDMA: B1/5/8
- GSM: 900/1800

### US Module

- LTE-FDD: B2/4/5/12/13/17/18/25/26
- LTE-TDD: B41
- WCDMA: B2/4/5
- CDMA&EVDO: BC0/BC1 GSM: 850/1900

### Software

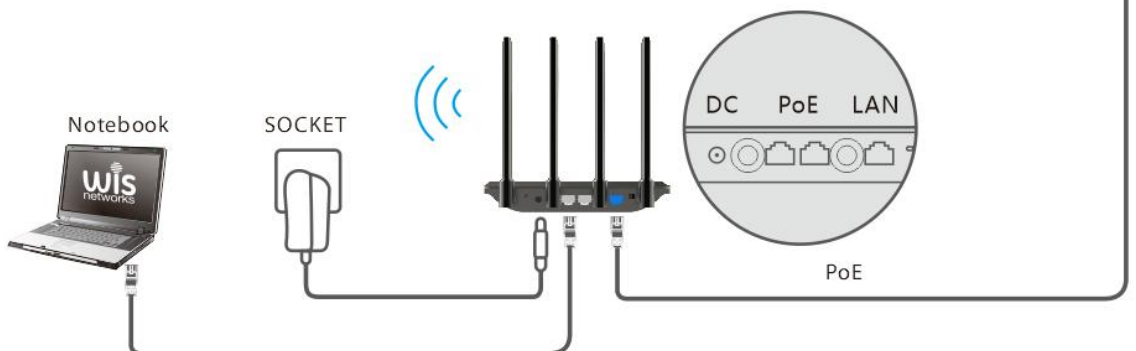
- Router: IPv4, Static Routing, Routing Forwarding
- APN
- Dynamic NAT switch
- DHCP Server
- DHCP Rela



### Typical Applications



4G Base station



## Specifications

Product code	WIS-H19-LTE
Architecture	MIPSBE
CPU	MTK7628N
Size of RAM	64 MB
Flash	16MB
Communication Standard	-- 3GPP , LTE CAT4
Applicable Network	-- 3G/4G
4G Transmission Rate	150Mbps / 50Mbps (Theoretical value. The actual rate depends on the operator.)
Antenna Frequency Range	1.7-4.2GHz 2X2 MIMO
Antenna Gain	19dBi Directional Antenna
Network Port	1 10/100Mbps port, 1 SIM card slot (Micro-SIM)
Software Functions	IPv4, Static Routing, Routing Forwarding APN Dynamic NAT switch DHCP Server DHCP Rela
Power Supply	PoE, 24V DC
Power Consumption	<10W
Led Indicator	Power/LTE/ETH/Signal Strength
Temperature	- Operating temperature: 0 °C ~ 40 °C, - storage temperature: -20 °C ~ +70 °C - Humidity: 5% ~ 95% (non-condensing)
Dimensions	350*270*285mm
Protection Level	IP65
Weight	2kg

## Order information

Model	WIS-H19-LTE (EU)	WIS-H19-LTE (US)
Suitable area	EMEA/APAC/Brazil	North America
Support	LTE-FDD: B1/3/5/7/8/20 LTE-TDD: B40 WCDMA: B1/5/8 GSM: 900/1800	LTE-FDD: B2/4/5/12/13/17/18/25/26 LTE-TDD: B41 WCDMA: B2/4/5 CDMA&EVDO: BC0/BC1 GSM: 850/1900