



2.4G 300Mbps LED Display Wireless CPE

WIS-Q2300E

WIS Networks Ltd.
www.wisnetworks.com

E-mail: info@wisnetworks.com

Version 1.0

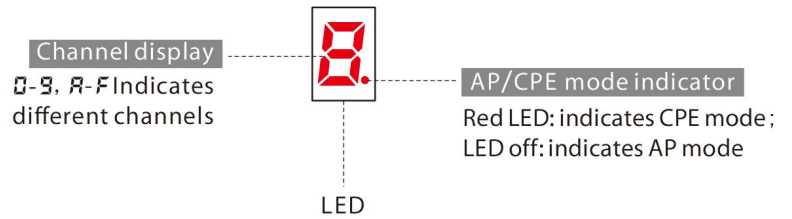
Product Overview

WIS-Q2300E is a 300Mbps 2*2 MIMO outdoor wireless CPE based on 802.11b/g/n technology. It is industry design with high performance, cost-effective and dedicated to long distance wireless network solutions.

Features

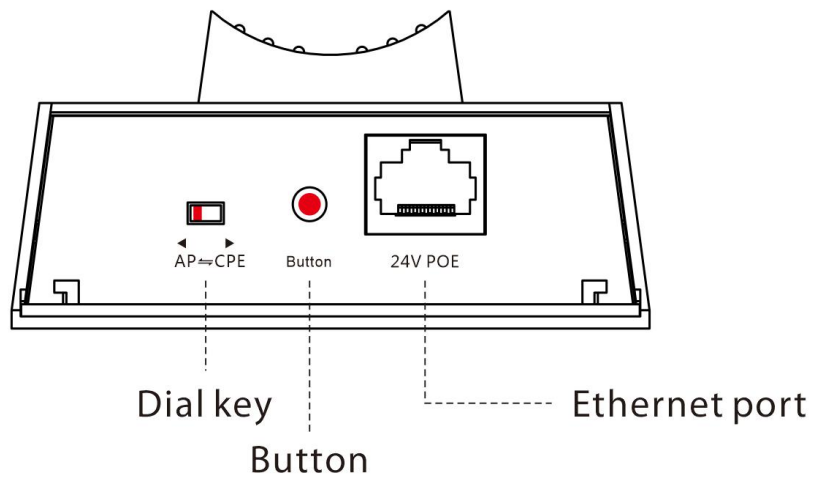
LED Display

- Channel display
- AP/CPE Mode indicator



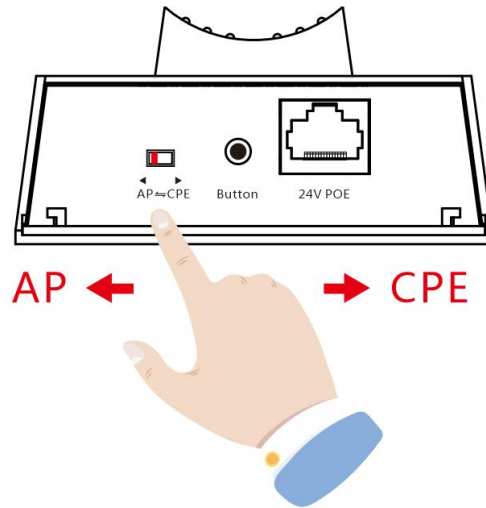
LED,Dial key,Button Description

- Channels Controller
- AP/CPE Controller
- Multiple mounting methods
- Extremely Amazing Performance

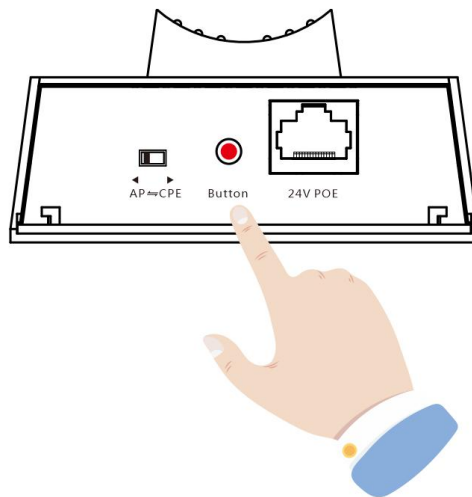


PTP Setting

1, Set one wireless bridge to AP and another to CPE

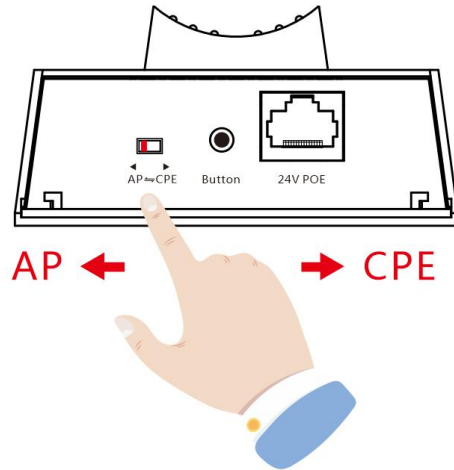


2, Set the paired bridge to the same number to match successfully

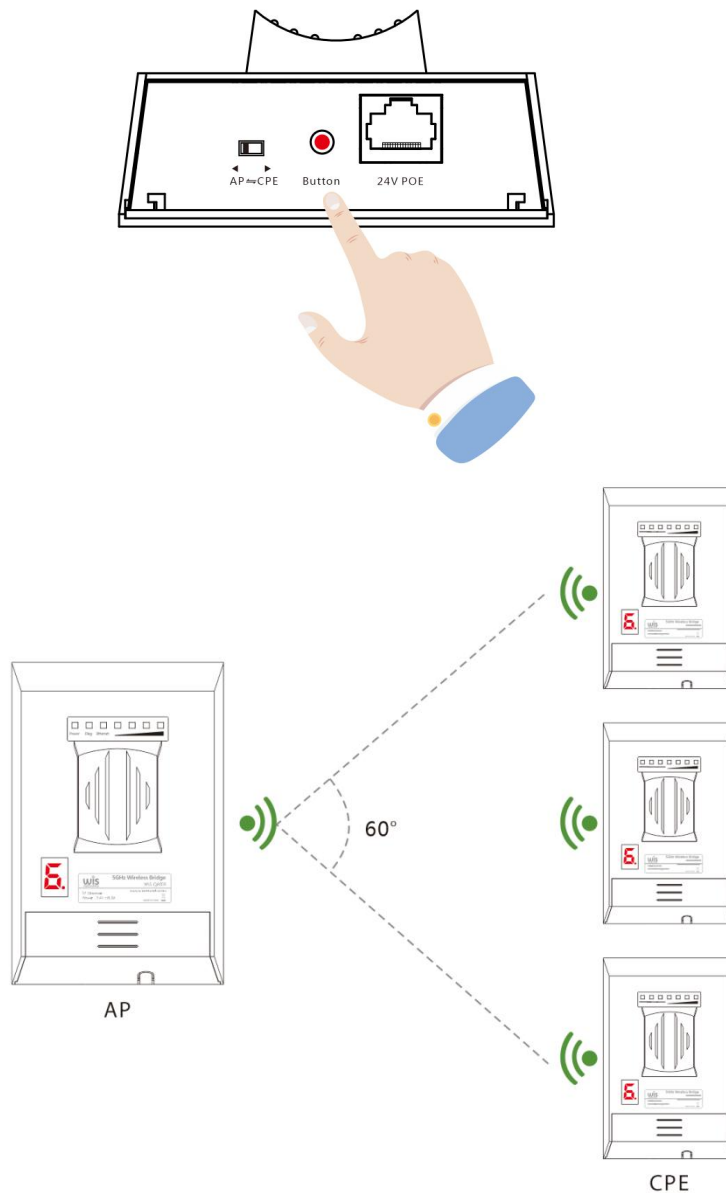


PTMP Setting

1, Set one wireless bridge to AP and another to CPE



2, Set the paired bridge to the same number to match successfully



Specifications

Radio

- 802.11b/g/n radio (Atheros 600MHz)
- Speed up to 300 Mbps
- Frequency Range: 2.4-2.4835GHz
- Tx Power up to 18dBm
- Rx Sensitivity
- 300M: -73dBm@10% PER
- 54M: -78dBm@10% PER

Antenna

- 8dBi panel antenna
- Beamwidth(HPBW) Horizontal:60°, Vertical:45°
- Open space 500m

Physical Parameters

- Dimension: 160*108*52mm
- Wight: 0.6kg
- Enclosure: PC
- ESD Protection: 2kV
- Working Temp: -20 ~ 60°C
- Storage Temp: -30 ~70°C
- Working Humidity: 10% ~95% non-condensing

Interfaces

- 1x 10/100 Base-T Ethernet
(LAN with Passive PoE)

Security

- Integrated Firewall
- WPA/WPA2;WPA-PSK/WPA2-PSK (AES/TKIP)
Encryption; 64/128-bit WEP;

LED

- Power: On/Off
- LAN:On/Off/Flashing
- RSSI Signal:1,2,3

Power

- 24VDC, 0.75A
- Power Consumption: 6W

Certification

- CE, RoHS

Package content

- WIS-Q2300E Radio
- Quick Setup Guide
- Power Adapter with Passive PoE
- Mounting bracket & kits